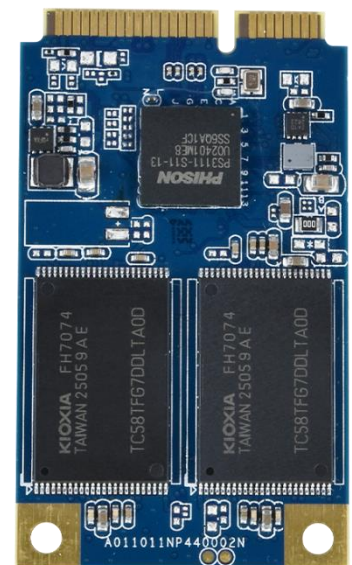


The Most **Reliable** Storage For Industries

SS170-300



Overview

SS170-300

Apacer SS170-300 is a well-balanced solid-state disk (SSD) with a standard form factor and excellent performance. Designed with a SATA 6 Gb/s interface, SS170-300 fully complies with the latest SATA Revision 3.2 specifications and delivers exceptional read/write speeds, making it an ideal companion for demanding industrial or server operations.



SS170-300 is built with a powerful SATA controller that supports on-the-module ECC for error correction as well as efficient wear leveling scheme for extended lifespan. Additionally, SS170-300 is equipped with a built-in thermal sensor (available on the wide-temp model only) to monitor the temperature of the SSD via S.M.A.R.T commands to prevent overheating. Operating under 6 Gb/s interface, SS170-300 is provided with Apacer latest S.M.A.R.T. that is primarily oriented for the latest SATA interface SSD, for drive lifetime monitoring and analysis.

In terms of reliability, SS170-300 features End-to-End Data Protection to ensure data integrity across the entire transfer path, delivering reliable and secure data transmission. It also incorporates a range of advanced technologies, including bad block management, power failure management, ATA secure erase, page mapping, TRIM support, and power-saving modes.

With exceptional performance and enhanced reliability, SS170-300 is the ideal storage or cache solution for a variety of applications, including industrial, imaging, computing, and enterprise markets.

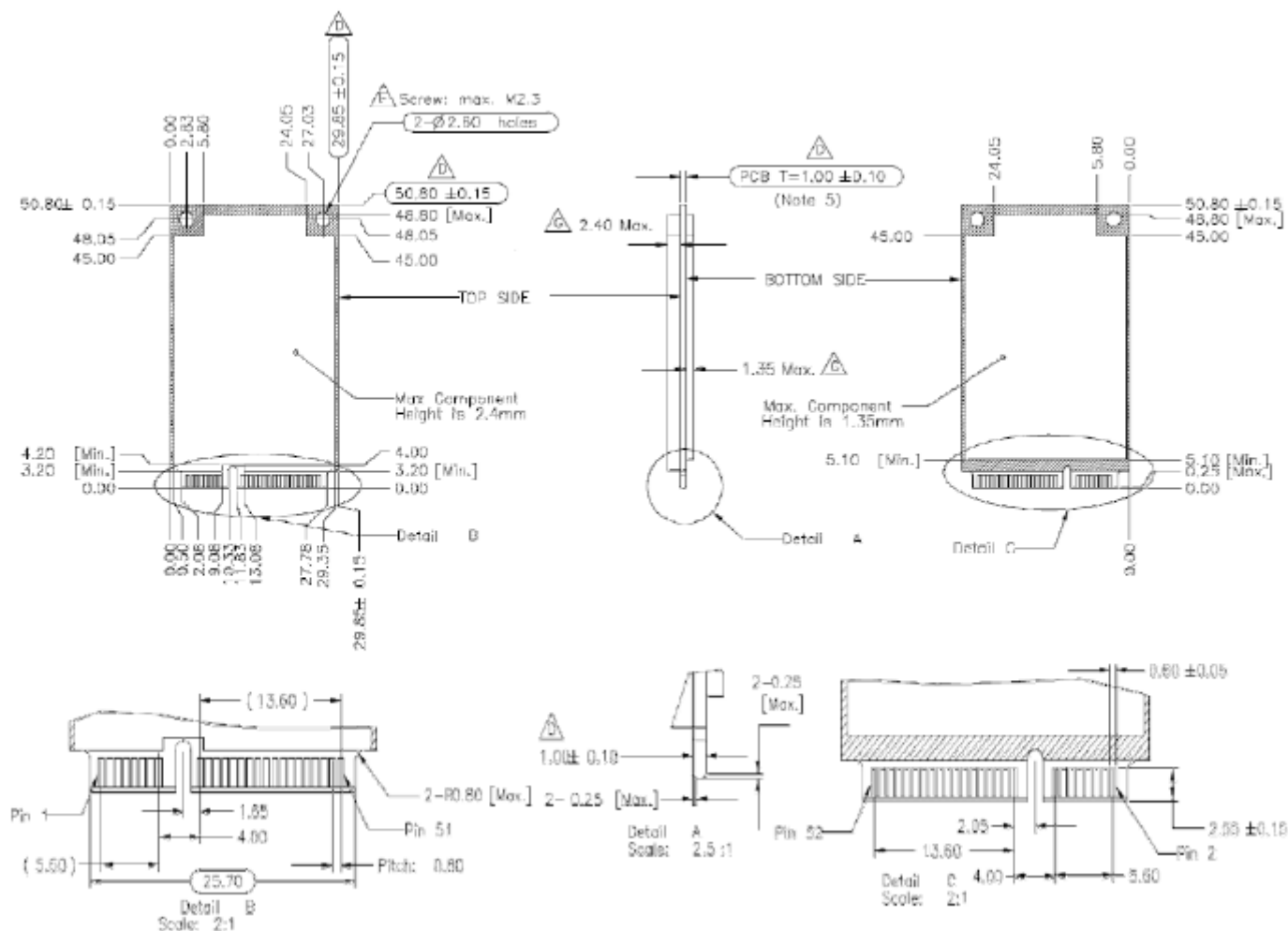
Features

- Low-Density Parity-Check (LDPC) Code
- Global Wear-leveling
- Flash Bad Block Management
- Flash Translation Layer: Page Mapping
- S.M.A.R.T.
- TRIM
- ATA Secure Erase
- Power Failure Management
- SSDWidget

Specifications

Model Name	SS170-300
Interface	SATA III
Connector	52-pin mSATA connector
Form Factor	JEDEC MO-300
NAND Flash Type	2D SLC
Capacity	8GB~64GB
External DRAM	No
Sustained Read Performance (MB/sec.)	Up to 510
Sustained Write Performance (MB/sec.)	Up to 310
ECC Engine	Low-Density Parity-Check (LDPC) Code
IOPS (4K Random Write)	65K
Standard Operating Temperature (°C)	0°C ~ 70°C
Extended Operating Temperature (°C)	-40°C ~ 85°C
Storage Temperature (°C)	-55°C ~ 100°C
Housing	-
Thermal Sensor	-
Shock	Operation: Acceleration, 50(G)/11(ms)/half sine (Compliant with MIL-STD-202G) Non-operation: Acceleration, 1,500(G)/0.5(ms)/half sine (Compliant with MIL-STD-883K)
Vibration	Operation: 7.69 Grms, 20~2000 Hz/random (Compliant with MIL-STD-810G) Non-operation: 4.02 Grms, 15~2000 Hz/random (Compliant with MIL-STD-810G)
Operating Voltage	3.3V ±5%
Power Consumption	Active Mode: 690 mA / Idle Mode: 110 mA
Dimension (L x W x H)	50.80 x 29.85 x 4.85(max.), unit: mm
MTBF (Hours)	>3,000,000

Mechanical Specifications



**For more information,
contact your Apacer representative**

Global Presence

Taiwan (Headquarter)
Apacer Technology Inc.
Tel: +886-2-2267-8000

Europe
Apacer Technology B.V.
Tel: +31-40-267-0000

U.S.A.
Apacer Memory America, Inc.
Tel: +1-408-518-8699

China
Apacer Electronic (Shanghai)
Co., Ltd.
Tel: +86-21-6228-9939

Japan
Apacer Technology Corp.
Tel: +81-3-5419-2668

India
Apacer Technologies Pvt. Ltd.
Tel: +91-80-35910296