

The Most **Reliable** Storage For Industries

CH210-MSD



Overview

CH210-MSD

Apacer microSD CH210-MSD is compatible with the microSD card version 5.0. The command list supports [Physical Layer Specification Ver6.10 Final] definitions. Card Capacity of Non-secure Area, Secure Area Supports [Part 3 Security Specification Ver5.0 Final] Specifications.



The microSD 5.0 card comes with 8-pin interface. It can alternate communication protocols between the SD mode and SPI mode. It performs data error detection and correction with very low power consumption. It supports capacity 128GB with exFAT SDXC. Also, it is equipped with SLC-liteX technology, supporting P/E cycles of up to 100,000 times to extend SSD endurance and enhance data reliability.

Apacer microSD CH210-MSD Secure Digital 5.0 with high performance, good reliability and wide compatibility is nowadays one of the most popular cards with customized firmware techniques in semi-industrial/medical markets already

* The actual available memory on the device is less than what is listed on the package. This is due to small discrepancies in file formats and algorithms used by various operating systems. In addition, a portion of memory space is reserved for system files and data sectors for better performance.

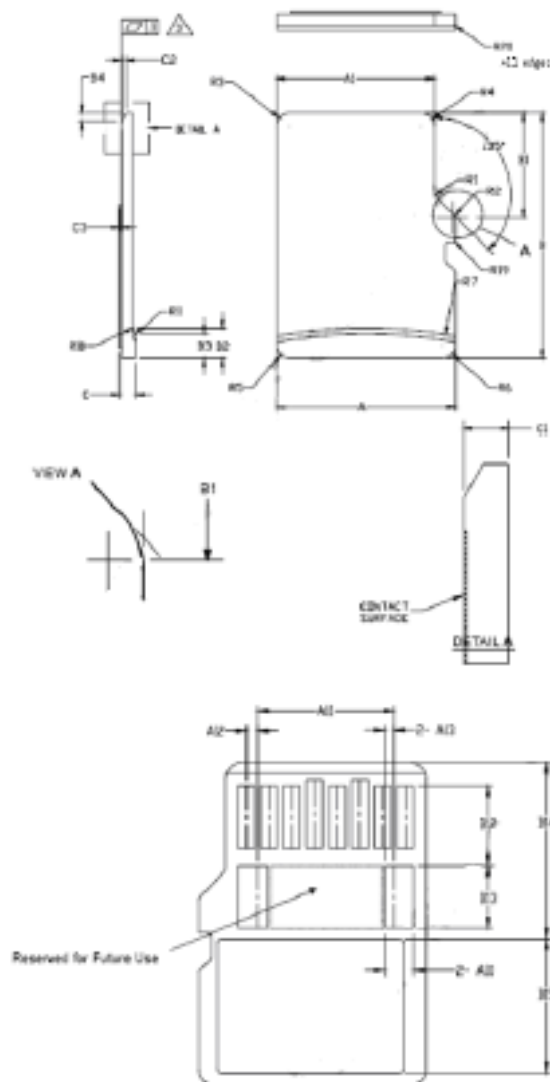
Features

- Compliant with SD 5.0 Specification
- Supports Class 10 with U3 and UHS-I**
- S.M.A.R.T Support
- Global Wear-Leveling and Block Management
- Low Power Consumption
- Wide Temperature Support (Optional)
- DataRAID™
- SMART Read Refresh™
- SLC-liteX

Specifications

Model	CH210-MSD
Interface	SD5.0
Connector	—
Form Factor	microSD
NAND Flash Type	3D TLC
Capacity	SDHC: 16GB~128GB
Sustained Read Performance (MB/sec)	Up to 90
Sustained Write Performance (MB/sec)	Up to 70
ECC Engine	Built-in advanced ECC algorithm
IOPS (4K Random Write)	300
Standard Operating Temperature (°C)	-25 ~ 85
Extended Operating Temperature (°C)	-
Storage Temperature (°C)	-40 ~ 85
Housing	-
H/W Write Protect	-
Shock	1,500G, 0.5ms
Vibration	Operation:7.69 Grms, 20~2000 Hz/random (Compliant with MIL-STD-810G) Non-operation:4.02 Grms, 15~2000 Hz/random (Compliant with MIL-STD-810G)
Operating Voltage	2.7V ~ 3.6V
Power Consumption	Active Mode: 80 mA & Idle Mode: 135 uA
Dimension (L x W x H)	15 x 11 x 1 mm
MTBF (Hours)	>3,000,000

Mechanical Specifications



Unit: mm

**For more information,
contact your Apacer representative**

Global Presence

Taiwan (Headquarter)
Apacer Technology Inc.
Tel: +886-2-2267-8000

Japan
Apacer Technology Corp.
Tel: +81-3-5419-2668

Europe
Apacer Technology B.V.
Tel: +31-40-267-0000

India
Apacer Technologies Pvt. Ltd.
Tel: +91-80-35910296

U.S.A.
Apacer Memory America, Inc.
Tel: +1-408-518-8699

China
Apacer Electronic (Shanghai)
Co., Ltd.
Tel: +86-21-6228-9939