

SSD⁺ Optimizer
User Manual

Table of Contents

1. Overview	2
2. Installation	2
2.1 PREREQUISITE.....	2
2.2 INSTALLATION PROCEDURE.....	3
2.3 AFTER INSTALLATION	7

1. Overview

To insure that Solid State Drives (SSD) stay at peak performance at all times, Diskeeper and Apacer jointly developed the *SSD+Optimizer*. By intelligently eliminating performance degrading free space fragmentation through specific optimization techniques, *SSD+Optimizer* technology actually reduces the aggregate program/erase cycles the Solid State Drive would otherwise incur during normal usage. In addition to performance benefits, *SSD+Optimizer* prolongs SSD longevity.

2. Installation

This section provides information you need before, during, and after installing *SSD+Optimizer*.

2.1 Prerequisite

Hardware Supported

- Apacer solid state drives with either parallel ATA or serial ATA interface
- Free space of 8 MB is required for installation

Operating System Supported

SSD+Optimizer currently supports the following operating systems:

- Microsoft Windows XP (Professional/Home/Embedded)
- Microsoft Windows Vista (Ultimate/Enterprise/Business/Home Premium/Home Basic/Starter)

File Systems Supported

SSD+Optimizer currently supports the following file systems:

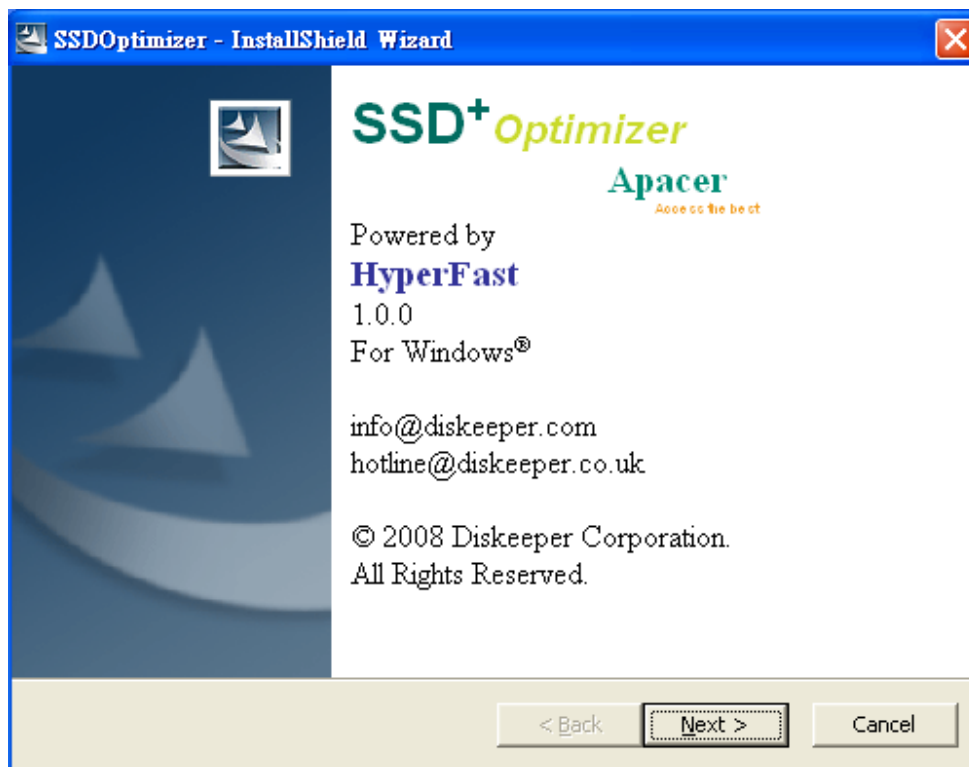
- NTFS
- FAT32
- FAT16

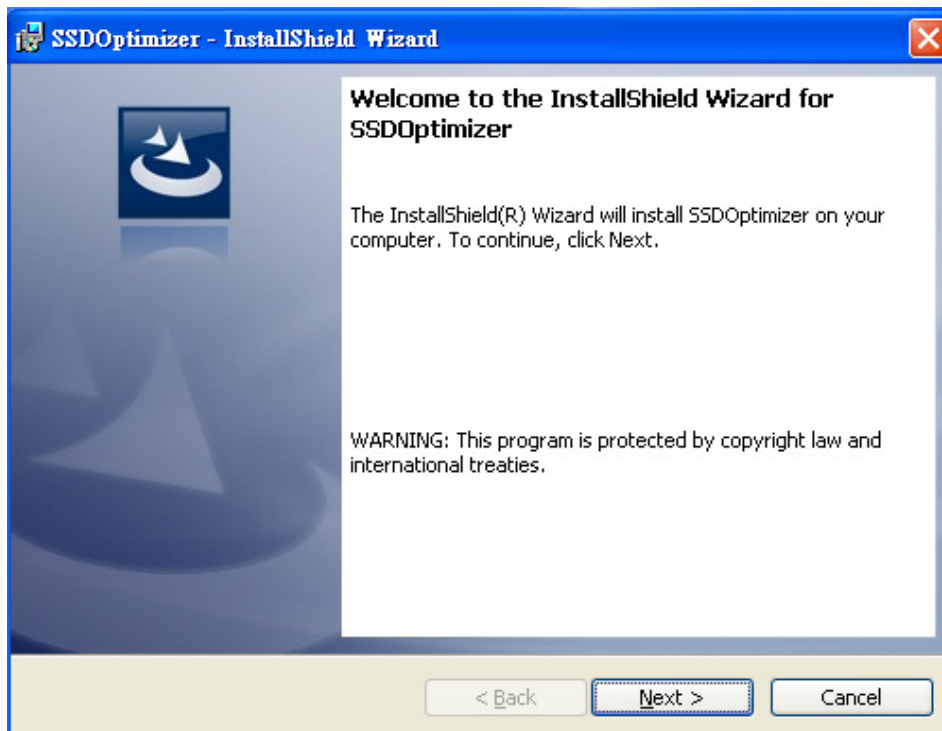
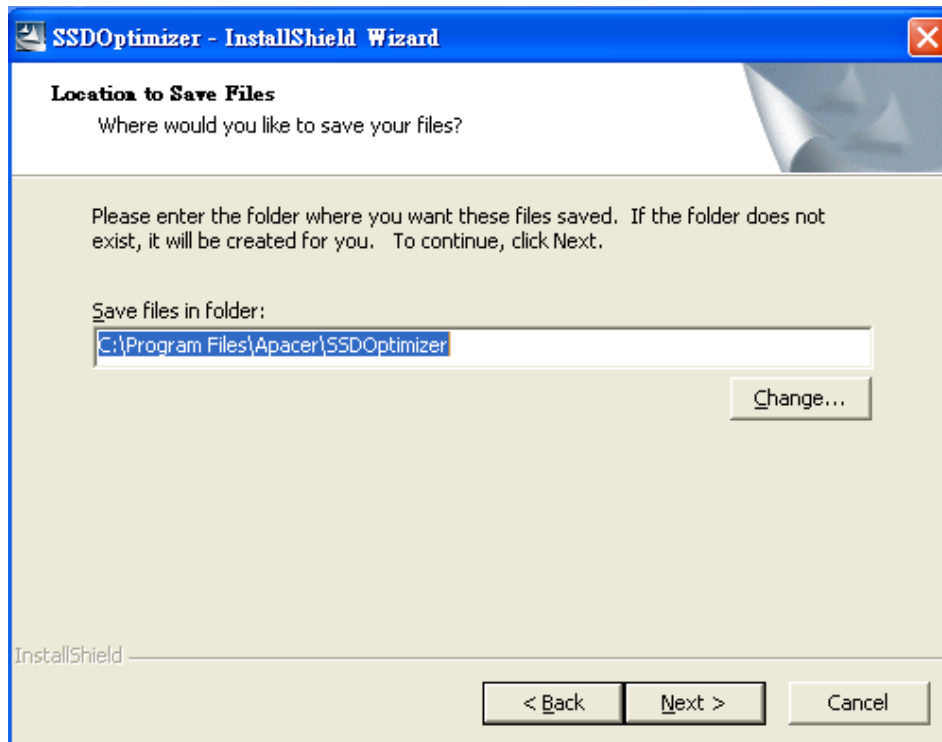
2.2 Installation Procedure

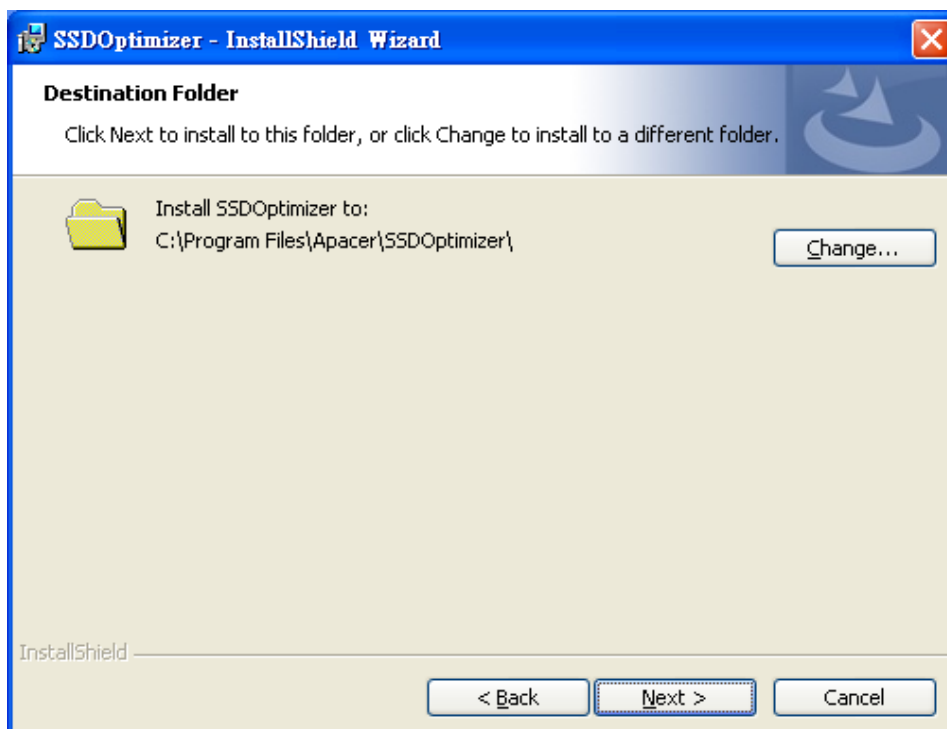
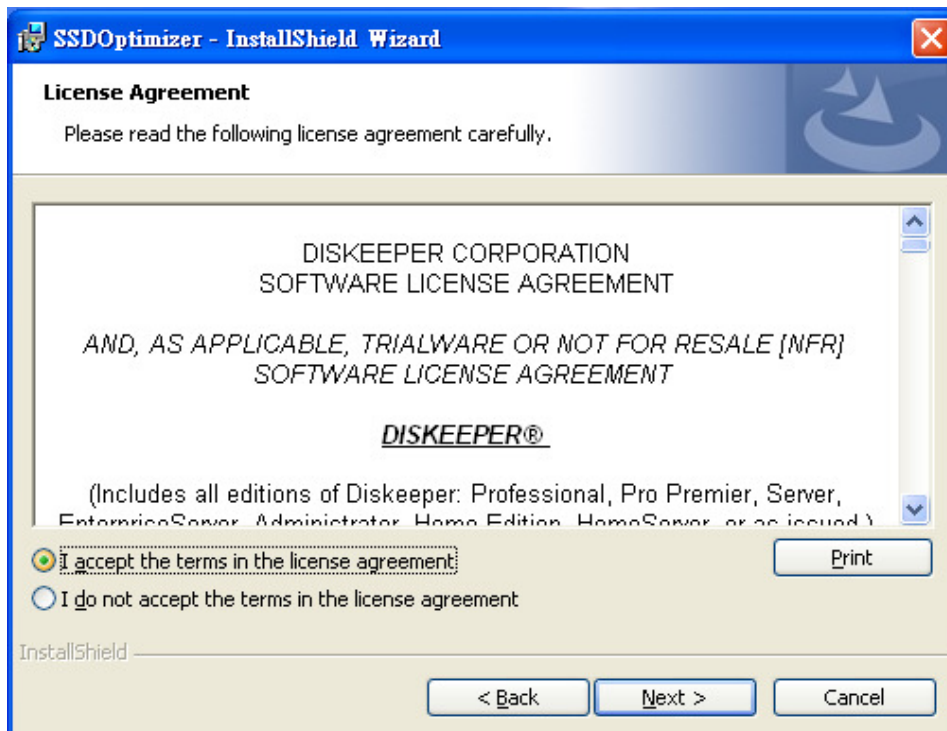
1. The installation procedure begins by double-clicking the executable file, SSD+Optimizer.

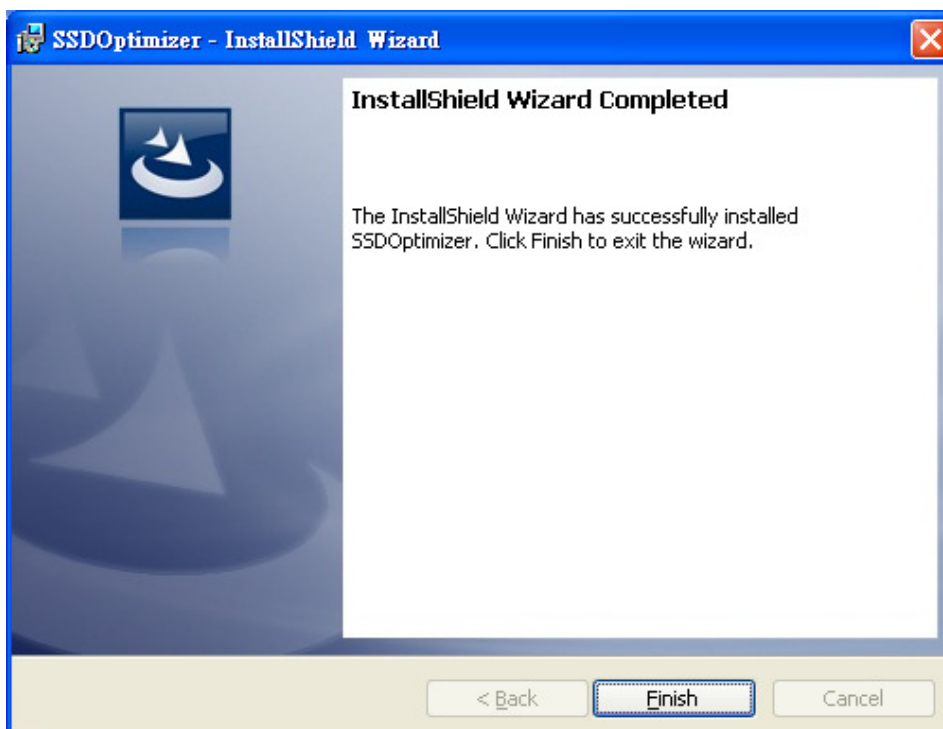
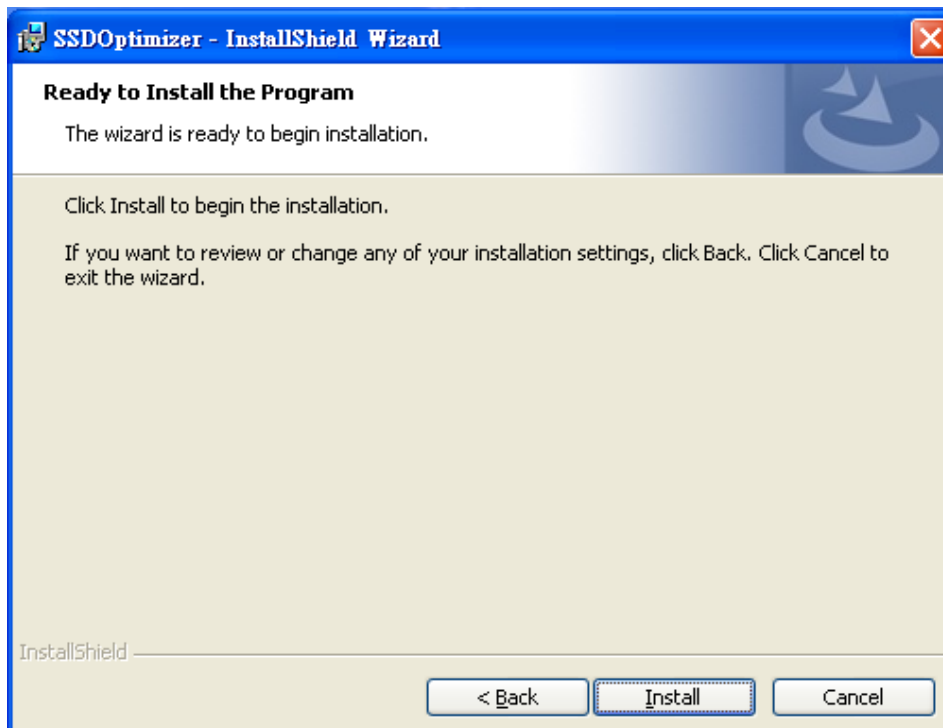


2. Follow the on-screen wizard to complete the installation.









2.3 After Installation

To ensure the installation is successful, open the Windows Task Manager and check if the entry of SSDOptimizer.exe exists.

