

USB 2.0 Multi-Plus Card Reader/Writer

User's Manual

Copyright Statement

No part of this publication may be reproduced in any form by any means without the prior written permission. Other trademarks or brand names mentioned herein are trademarks or registered trademarks of their respective companies.

Disclaimer

Information in this document is subject to change without notice. The manufacturer does not make any representations or warranties (implied or otherwise) regarding the accuracy and completeness of this document and shall in no event be liable for any loss of profit or any commercial damage, including but not limited to special, incidental, consequential, or other damage.

All trademarks, trade names and copyrights are properties of their respective owners.

September 2005, Rev1.0

Safety Instructions

Always read the safety instructions carefully

- Keep this User's Manual for future reference
- Keep this equipment away from humidity
- If any of the following situation arises, get the equipment checked by a service technician:
 - The equipment has been exposed to moisture.
 - The equipment has been dropped and damaged.
 - The equipment has obvious sign of breakage.
 - The equipment has not been working well or you cannot get it work according to User's Manual.

Table of Contents

1. Introduction	1
Features	1
Package Contents	2
System Requirements.....	2
LED Status (Optional)	2
Supported Memory Cards	2
2. Installation	3
Driver Installation for Windows 98SE.....	3
Icon Utility Installation	4
MAC 9.x	6
Installation Verification.....	7
MAC 10.x	8
Linux	9
3. Using the Card Reader/Writer	10
Notes on Using the Card Reader.....	10
Removing a Card / Unplugging the Reader/Writer.....	10
Under Windows	10
Under Mac	12
4. Specifications	13
5. Regulatory Compliance	14
FCC Conditions	14
CE	14
WEEE Information	14

1. Introduction

As the specification of memory cards is updated day after day, users are looking for a card reader that accommodates all the memory cards as far as possible. This USB 2.0 Multi-Plus Card Reader/Writer supports almost all the memory cards available in the market. In addition to those commonly used memory cards, it also supports Mini-SD, RS-MMC and MS DUO without the need of an adapter. Most of all, it supports TransFlash card*, the smallest memory card dedicating for some new mobile phones. Data can be exchanged between different slots. It is both convenient and cost-effective for users that have various memory cards used in digital cameras, digital music players, personal digital assistants, cell phones, and other portable devices.

* Only the 5-slot model supports TransFlash™ card.

Features

- Hi-Speed USB2.0 interface with transfer rate of up to 480 Mbps.
- Backwards compatible with USB 1.1 ports.
- Supports hot-swapping and Plug-and-Play function.
- With power and status LED.
- No additional driver installation required for Windows ME, 2000, XP and Mac OS X 10.x. Driver included for Windows 98SE and Mac OS 9.x.
- Color icon utility software included for easy drive location (for Windows only).
- Supports Compact Flash™ I/II, CF Extreme™ III, CF Ultra™ II, Micro Drive™ (MD), Magicstor™, Secure Digital™ Card (SD), SD Ultra™ Card, Mini SD™, MultiMedia™ Card (MMC), MMC 4.0, RS MMC™, RS MMC 4.0, Memory Stick™ (MS), Memory Stick Pro (MS PRO), Memory Stick Duo™ (MS DUO), MS Pro MagicGate™, MS MagicGate™, MS Duo MagicGate™, MS Pro Duo™, MagicGate™, Memory Stick Select Function, Smart Media Card™ (SM), SM RAM Card, XD-Picture™ Card* and TransFlash™ card**.

* Not all models support XD-Picture™ Card. Please check the package for supported medias.

** Only the 5-slot model supports TransFlash™ card.

Package Contents

Before installation, please check the items of the package.

- USB2.0 Multi-Plus Card Reader/Writer x1
- Driver CD x1
- USB 2.0 Cable (optional) x1

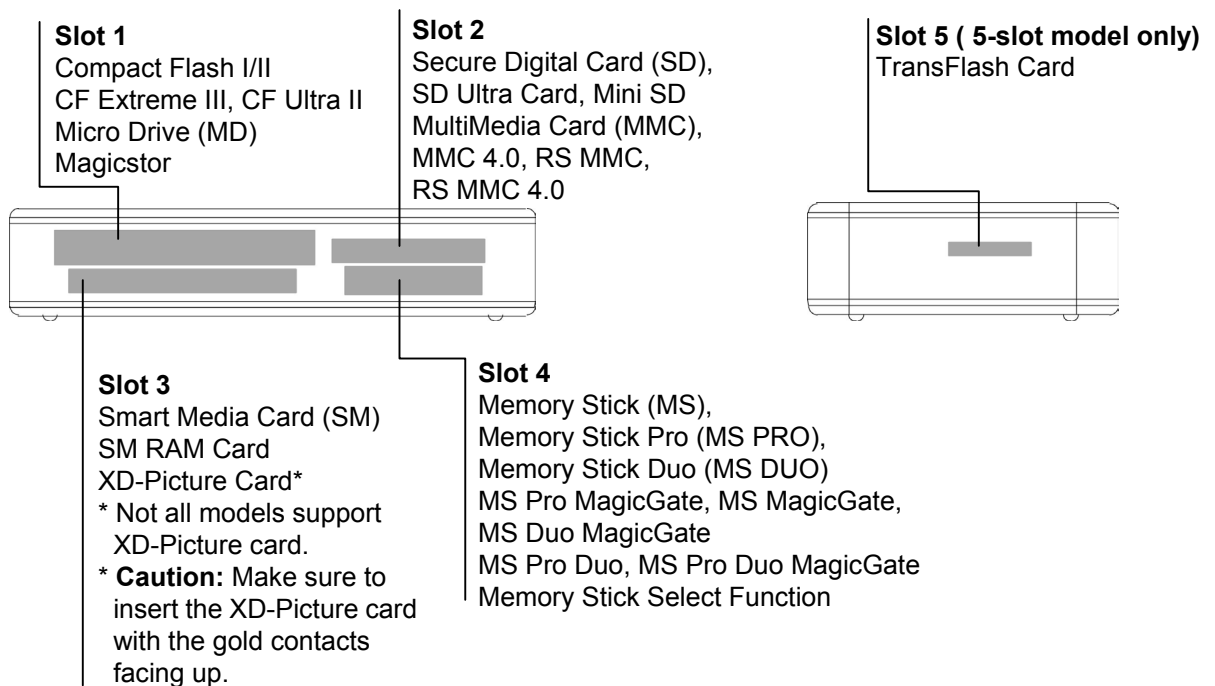
System Requirements

- IBM compatible Pentium-233 MHz or faster PC & MAC with USB support
- 64 MB RAM or more
- USB 2.0 port required for Hi-Speed transfer
- Windows® 98SE/ ME / 2000 / XP SP1; Mac OS 9.x and 10.x, Linux Kernel 2.4.x and above

LED Status (Optional)

LED	Color	Description
Power	Red	On: The reader/writer is connected to a powered-on computer.
Status	Green	On: A memory card is inserted. Flashing: Reading/writing data from/to the inserted memory card.

Supported Memory Cards



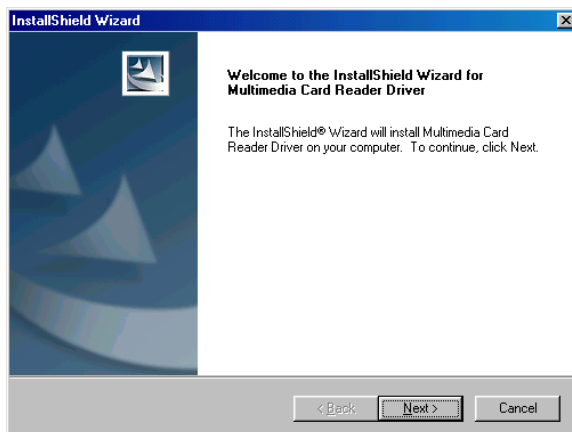
2. Installation

For Windows ME, 2000 and XP, no additional driver installation is required. Simply plug the reader/writer to the computer and it's ready to use. To better distinguish between different slots, refer to the "Icon Utility Installation" section to install the icon utility.

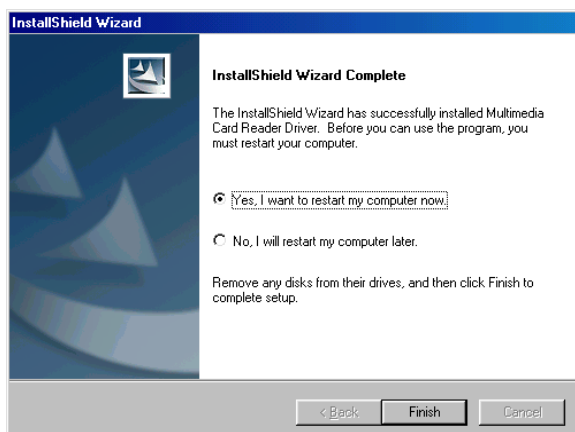
Driver Installation for Windows 98SE

Note: Before connecting the card reader to your computer for the first time, please follow these steps to install the driver first.

1. Insert the provided CD into your CD-ROM drive. Locate and double-click the **setup.exe** file under **x:\Driver\Win98** where x: is your CD-ROM drive letter.
2. When the welcome screen appears, click **Next**.



3. Select **Yes, I want to restart my computer now** and click **Finish**. After restart, proceed with next section to install the color icon utility.

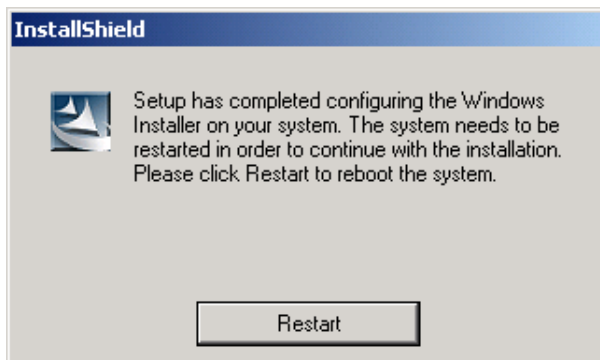


Icon Utility Installation

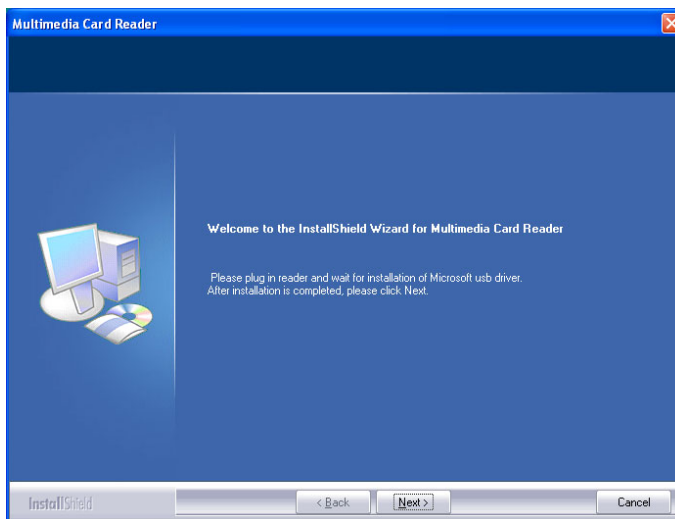
A color icon utility dedicated for Windows is provided to help you better distinguish between different slots. Take these steps to install the utility.

Note: For Windows XP, SP1 or later is required to install the icon utility.

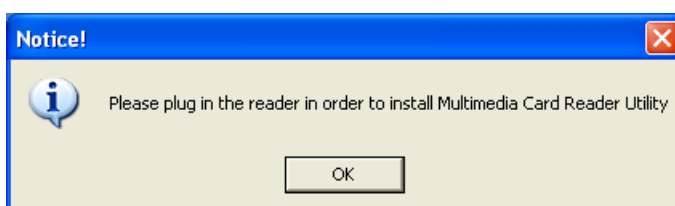
1. Insert the provided CD into your CD-ROM drive. Locate and double-click the **setup.exe** file under **x:\Driver\Utility** where x: is your CD-ROM drive letter.
2. *For Windows ME and 2000 only:* The setup program will need to reboot your system to continue with the installation. When the following screen appears, click **Restart**.



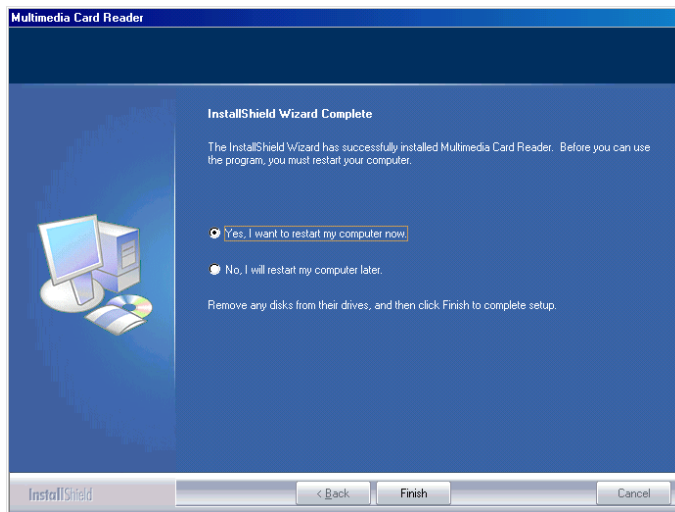
3. At the welcome screen, click **Next**.



4. If the reader/writer is not plugged to your computer, plug it as prompted and click **OK**.

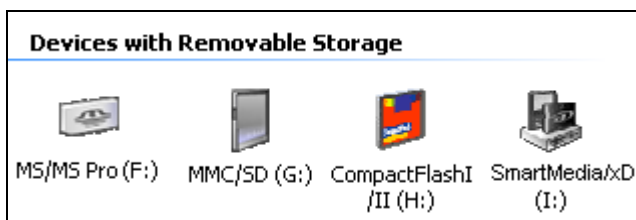


5. Select **Yes, I want to restart my computer now** and click **Finish**. (Windows XP users will not see this screen; the setup is complete without the need to restart the system.)

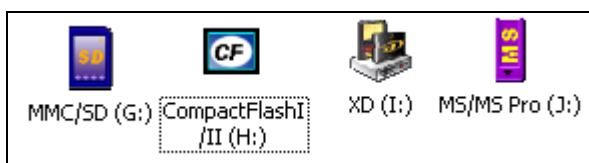


After installation, an USB device icon will appear on the notification area of the taskbar under Windows Me, 2000 and XP only). You will also see a couple of removable disk icons each with an assigned drive letter in **My Computer**. You can write and read files to and from the device as you would with an ordinary disk drive.

Windows XP example



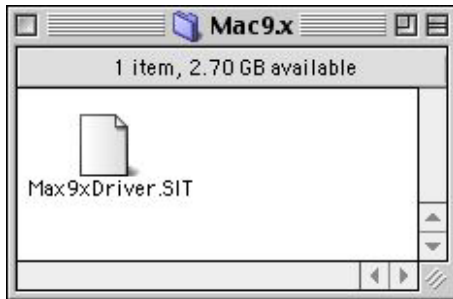
Windows 2000 example



* The drive letters may be different according to your system's configuration. The icon may differ according to your model and the card inserted.

MAC 9.x

1. Insert the provided driver CD into your CD-ROM drive. Double-click the CD icon on the desktop and navigate to the directory of `\Driver\Mac9.x`. Copy and then paste the **Max9xDriver.SIT** file to the desktop.



2. Double-click the **Max9xDriver.SIT** file on the desktop to extract the file. Then open the **AlcorCardReaderDriver** folder that is extracted.



3. Double-click the **AlcorCardReaderDriverInstaller** file to start installation.



4. Click **Install**.



5. Click **Restart**.



6. After restart, plug the reader/writer to a free USB port of the Mac.

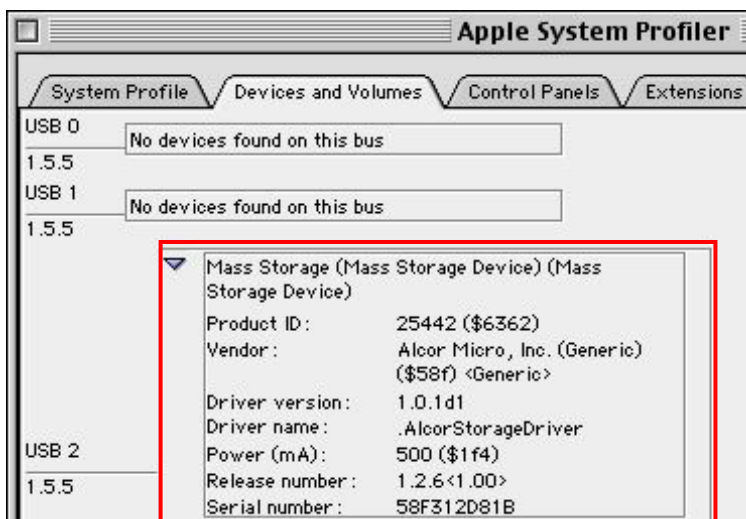
Installation Verification

To verify the driver installation under Mac 9.x, take these steps:

1. Click the Apple icon in menu bar and select **Apple System Profiler**.



2. Click the **Devices and Volumes** tab. A mass storage device should be displayed for the USB port that is plugged with the reader/writer.



The inserted memory cards will mount to the desktop and appear as removable media devices. (The name and appearance of each icon depends on the card's format and label.)



MAC 10.x

For Mac 10.x, no additional driver installation is required. Simply plug the reader/writer to a free USB port of your Mac and it's ready to use.

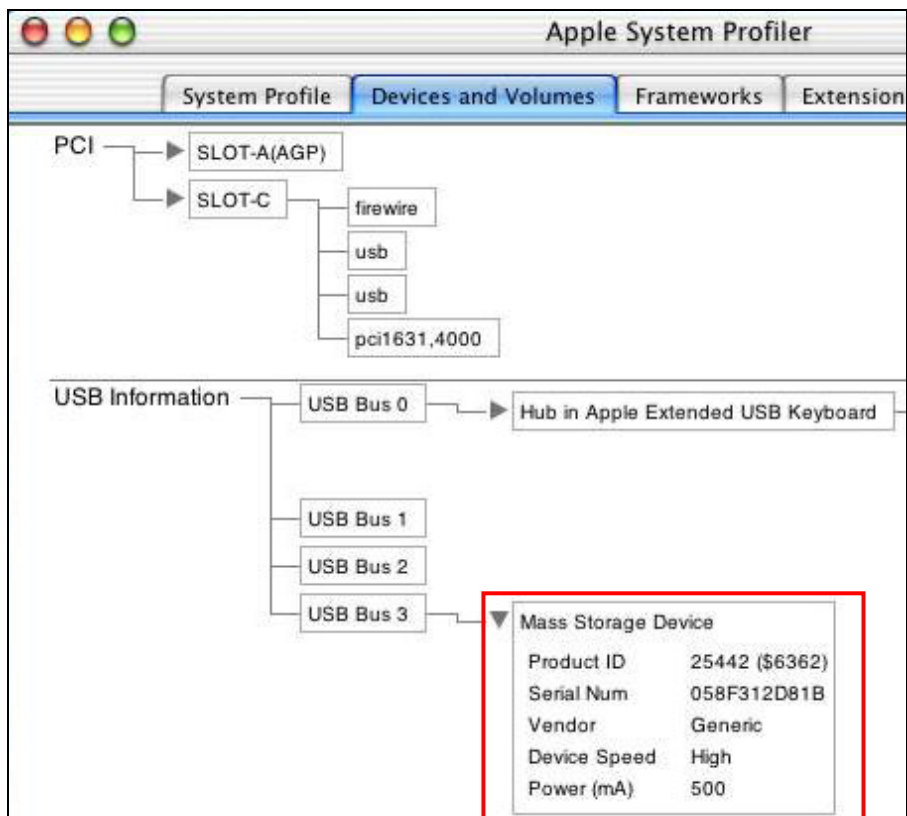
To verify that the reader/writer is properly plugged, take these steps:

1. On the desktop, double-click the startup disk and go to **Applications > Utilities > Apple System Profiler**.



Apple System Profiler

2. Click the **Devices and Volumes** tab. A mass storage device should be displayed for the USB port that is plugged with the reader/writer.



The inserted memory cards will mount to the desktop and appear as removable media devices. (The name and appearance of each icon depends on the card's format and label.)



Linux

No driver is required for Linux kernel versions 2.4.x and later. The installation procedures are as follows:

1. Add the following entry to `/etc/modules.conf`. Then save and exit the file.

```
options scsi_mod max_scsi_luns=128
```

2. Reboot your system.
3. Insert the card reader to a free USB port of your computer.
4. Go to **System Tools > Hardware Browser > Hard Drives** to verify that the sockets (sda1, sdb1, sdc1, sdd1) are detected under corresponding items.

```
/dev/sda
```

```
/dev/sdb
```

```
/dev/sdc
```

```
/dev/sdd
```

*The example entries assume you have no other SCSI device.

5. Launch the terminal and become root user.
6. Create a matching mount point for the socket you want to use.

```
mkdir /mnt/CF
```

```
mkdir /mnt/SD
```

```
mkdir /mnt/SM
```

```
mkdir /mnt/MS
```

7. Mount the sockets.

```
mount /dev/sda1 /mnt/CF
```

```
mount /dev/sdb1 /mnt/SD
```

```
mount /dev/sdc1 /mnt/SM
```

```
mount /dev/sdd1 /mnt/MS
```

8. Now you can read and write to and from the memory cards.

To verify the file format of the memory card, e.g., the CF card:

```
DF /dev/sda1
```

To unmount the socket, e.g., the CF socket:

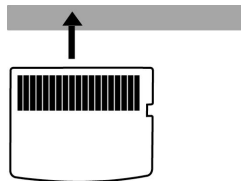
```
umount /dev/sda1 /mnt/CF
```

3. Using the Card Reader/Writer

Notes on Using the Card Reader

When using the card reader/writer, pay attention to the following notes:

- USB 2.0 performance (high-speed of up to 480 Mbps) can only be expected when connected to an USB 2.0 port. The device runs at full speed (of up to 12Mbps) when connected to an USB 1.1 port.
- For 5-slot model: **DO NOT** use the SD/MMC and TransFlash sockets at the same time. Only one card can be accessed if both sockets are inserted with cards.
- Make sure to insert the memory cards in correct orientation to prevent damage to your cards and the sockets.
- For models supporting **XD-Picture** card, make sure to insert the XD-Picture card with the gold contacts facing up.



- Do not insert or extract the memory cards while the status LED is flashing.

Removing a Card / Unplugging the Reader/Writer

Under Windows

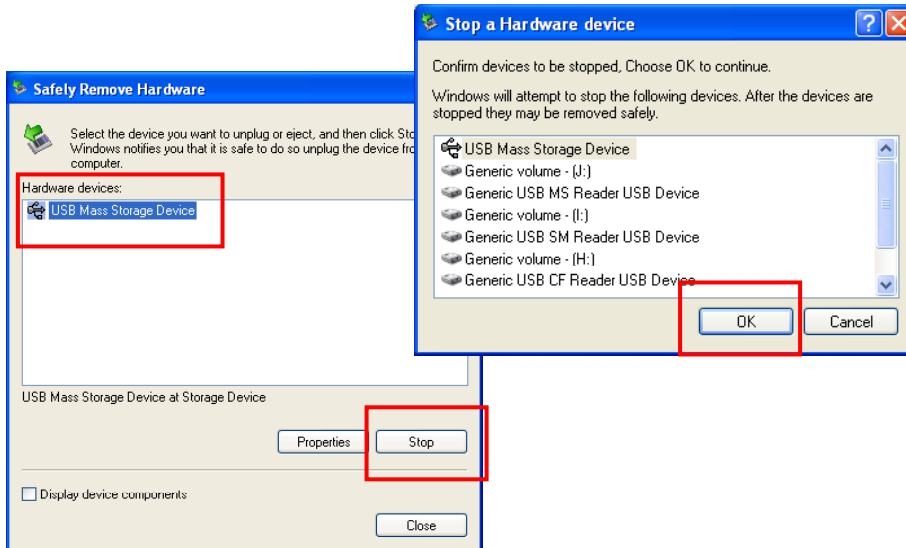
Before unplugging the reader/writer from your computer, please use the unplug/eject hardware icon in the system tray to safely remove the device.

Caution: Before removing a memory card or unplugging the reader/writer from your computer, make sure that no file is being accessed by an application or being copied. **DO NOT** remove a memory card or unplug the device when the status LED is flashing.

1. In the notification area, right-click the unplug/eject icon and select **Unplug or eject hardware** or **Safely Remove Hardware**.



2. Select the device you want to unplug, then click **Stop** and **OK**.



3. When Windows notifies you that it is safe to do so, click **OK** and unplug the reader/writer from your computer.



- * The screen shots presented here may vary according to your operation system and the model of your reader.

Under Mac

For Mac, remember to drag the corresponding icon representing the card to the trash can before extracting a card.

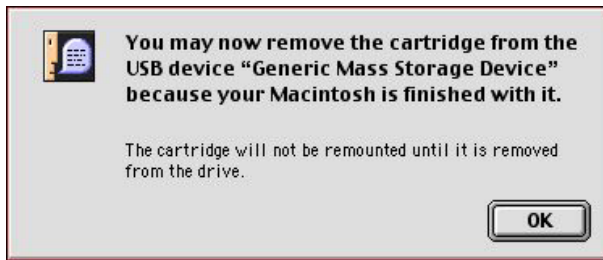
When prompted, click **OK** and now you can extract a card.



Mac 9.x



Mac 10.x



4. Specifications

Model	5-Slot Model	4-Slot Model with XD support	4-Slot Model w/o XD support
Slot 1	Compact Flash I/II, CF Extreme III, CF Ultra II, Micro Drive (MD), Magicstor		
Slot 2	Secure Digital Card (SD), SD Ultra Card, Mini SD MultiMedia Card (MMC), MMC 4.0 RS MMC, RS MMC 4.0		
Slot 3	Memory Stick (MS), Memory Stick Pro (MS PRO), Memory Stick Duo (MS DUO), MS Pro MagicGate, MS MagicGate, MS Duo MagicGate, MS Pro Duo, MS Pro Duo MagicGate Memory Stick Select Function		
Slot 4	Smart Media Card (SM), SM RAM Card, XD-Picture Card		Smart Media Card (SM), SM RAM Card
Slot 5	TransFlash	N/A	N/A
Interface	USB 2.0		
Transfer rate	Up to 480 Mbps via USB 2.0; up to 12 Mbps via USB 1.1		
USB port	USB 2.0 Mini B Type female connector		
Power	500mA, Bus-Powered		
Certification	CE, FCC		
Dimension	92 (L) x 52 (W) x 18 (H) mm		
Weight	65g		

* Specification is subject to change without further notice.

5. Regulatory Compliance

FCC Conditions

This equipment has been tested and found to comply with Part 15 of the FCC Rules. Operation is subject to the following two conditions:

- (1) This device may not cause harmful interference
- (2) This device must accept any interference received. Including interference that may cause undesired operation.

CE

This equipment is in compliance with the requirements of the following regulations:
EN 55 022: CLASS B

WEEE Information

For EU (European Union) member users:

According to the WEEE (Waste electrical and electronic equipment) Directive, do not dispose of this product as household waste or commercial waste. Waste electrical and electronic equipment should be appropriately collected and recycled as required by practices established for your country. For information on recycling of this product, please contact your local authorities, your household waste disposal service or the shop where you purchased the product.

