

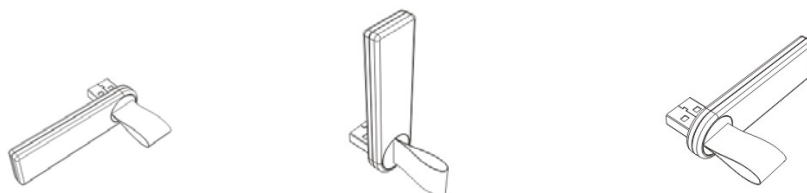
## AH421 Quick Installation Guide

### Features

- 180° swivel design without blocking other USB ports or expansion slots
- Blade-shaped design for embedding to laptops
- Enhanced for Windows ReadyBoost accelerates opening programs and files.

### Getting start

- Remove the plastic cover form USB connector.
- Plug the AH421 into an available USB port on your notebook.
- Turn 180 degree to avoid the dead angle.



- Don't need to remove AH421 after turn off your notebook.

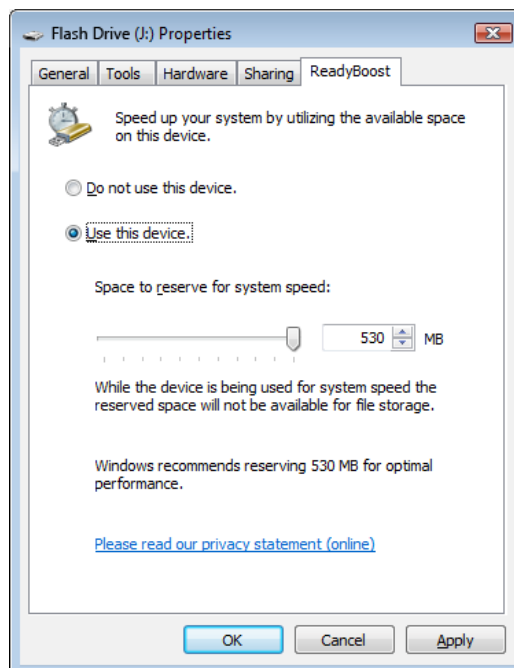
## Windows ReadyBoost Information

ReadyBoost supports the flash storage devices to boost system performance.

When flash storage devices enhanced for ReadyBoost are installed in PCs, Windows Vista AutoPlay shows a dialog box to users and asks them whether they would like to use the devices with ReadyBoost to improve performance.

The subsequent property sheet for the device provides options for users to select an appropriate cache size to put in the device.

Cache sizes can range from 230 MB up to 4 GB. Microsoft recommends at least a 1:1 ratio of ReadyBoost cache size to main memory



realize (RAM) capacity. Higher ratios up to 3:1 will optimal performance benefits.

If the device is removed from the computer, no data is lost, but the computer loses the performance boost and the operating system reverts to sending requests to the disk.

### Flash Performance

Flash storage devices must meet minimum performance requirements to support ReadyBoost, including 2.5 MB/s throughput for random 4K reads and 1.75 MB/s for random 512-K writes.

Higher performance requirements must be met for the device to be designated as “enhanced for ReadyBoost”: 5 MB/s for random 4K reads and 3 MB/s for random 512-K writes. Microsoft recommends that users use devices enhanced for ReadyBoost to take full advantage of the benefits provided by ReadyBoost.

