

AE101 USB 2.0 Embedded Card Reader

User's Manual

Chapter 1 Introduction

Thanks for your purchase of Apacer AE101 USB 2.0 Card Reader/Writer.

Before operating the unit, please read this manual thoroughly and keep it for future reference. This manual will help you learn to use many of the exciting features of this product and make your player experience more enjoyable.

This manual contains important safety measures and operational information, so please read all the information carefully before you use the device in order to avoid any unexpected accidents.

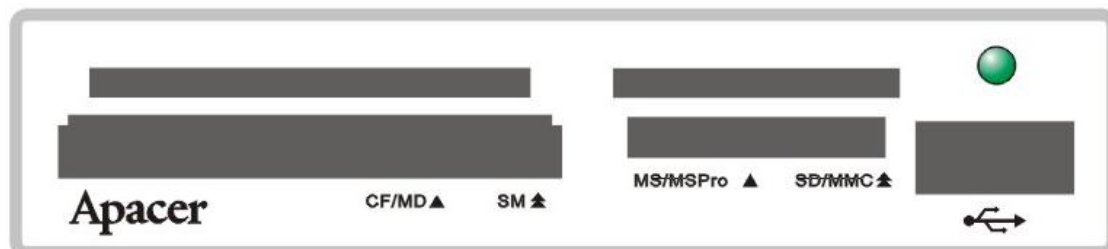
Chapter 2 System Requirements

- IBM PC and compatible 486DX-100 MHz CUP or higher.
- Available USB port
- CD-ROM Drive
- At least 16MB storage
- Windows 98SE*/ 2000 /ME/ XP / Vista , Mac OS X 10.3 and abover (*=requires driver support)

Chapter 3 Product Features

- USB 2.0 high speed, all-in-1 embedded card reader
- Support CF 3.0 (16-bit IDE mode)
- Support SDHC / MMC 4.X
- Easy to transfer/exchange data among different slots
- Stable metal case design, more reliable quality
- Multi-colors front panels with compact body size (low-profile)
- Fool-proof USB connector, avoid potential risk while installation

Product Function

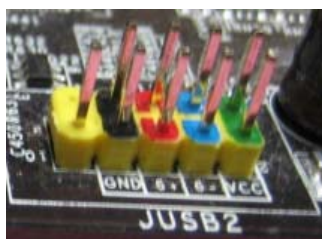


Support Memory Cards:

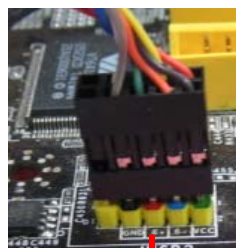
- **Slot CF/MD :**
CompactFlash (Type I/ II, Ultra II, Extreme, Extreme III, Ultra), Microdrive
 - **Slot SM**
SmartMedia
 - **Slot SD/MMC :**
MMC: MMC , RS MMC*, MMCmobile* ,MMCplus ,MMC Micro *
SD: SD,SDHC, Mini SD*, Mini SDHC*,Micro SD* Micro SDHC*
 - **Slot MS/MSPro**
Memory Stick, Memory Stick Duo, Memory Stick Pro, Memory Stick Pro Duo, Memory Stick MagicGate , Memory Stick Duo MagicGate , Memory Stick Pro MagicGate , M2 *
- (* = Need Adapter)

Chapter 4 Hardware setup for internal card reader

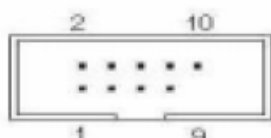
- Remove your computer case cover and locate an empty 3.5" bay.
- Insert emended card reader into the empty 3.5" bay and fasten it with screw or clip mechanism.
- Cable USB pin 1 has to connected to the USB pin1 on your motherboard. Please refer to your motherboard manual for USB header pin assignment information.
- Cable pin definition for card reader:



PORT HEADER



**FRONT INTERNAL CABLE
CONNECTED TO PORT HEADER**



Chapter 5 Driver Installation Guide

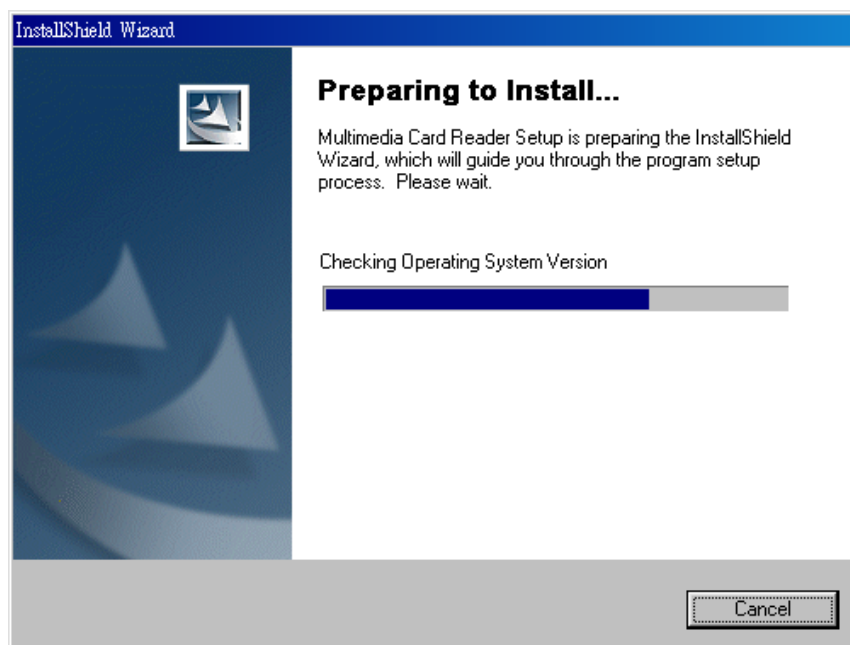
Windows 98/98SE

Please follow the below process to install USB Card Reader Driver :

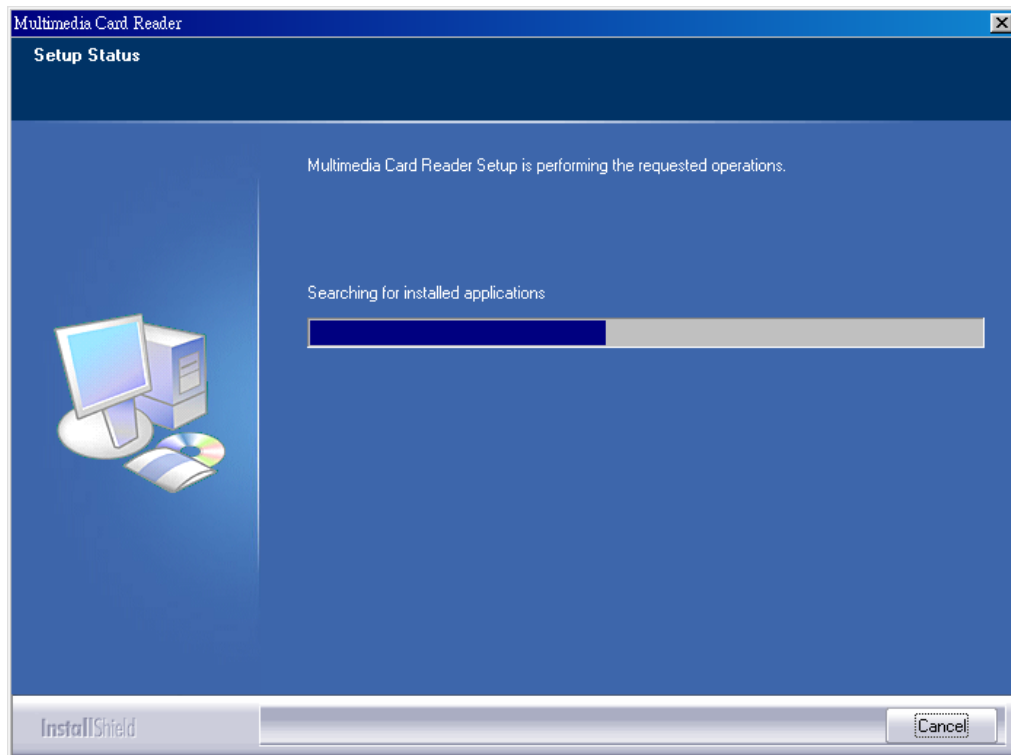
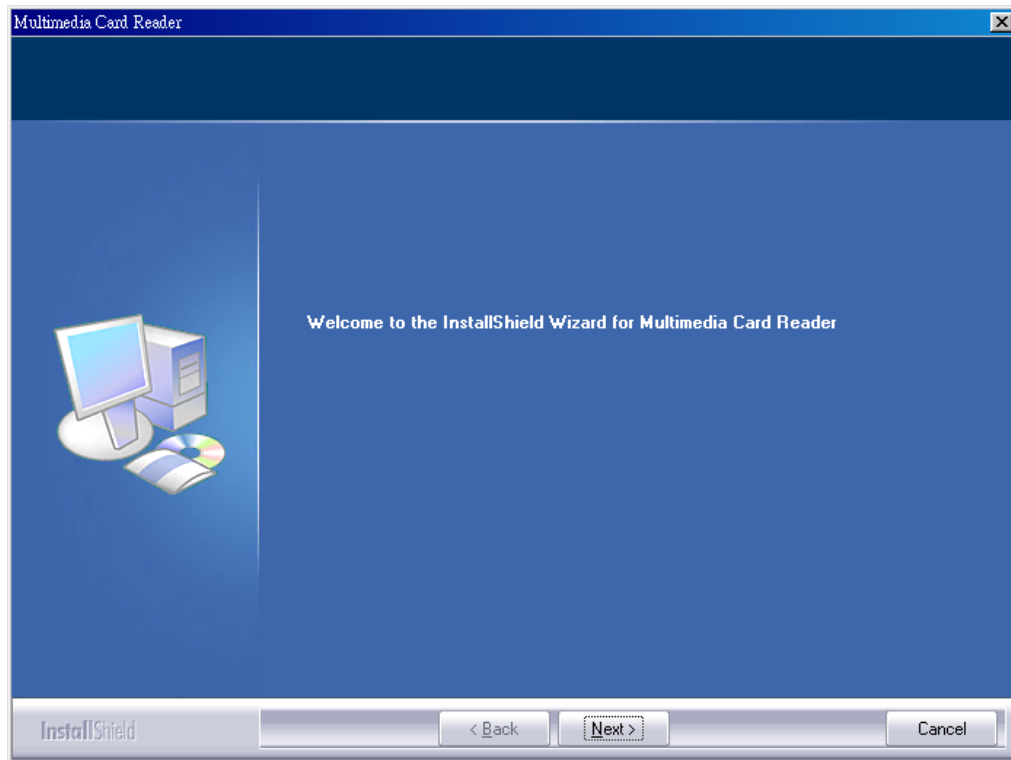
1. Start your computer and be sure that the internal card reader is not yet physically installed.



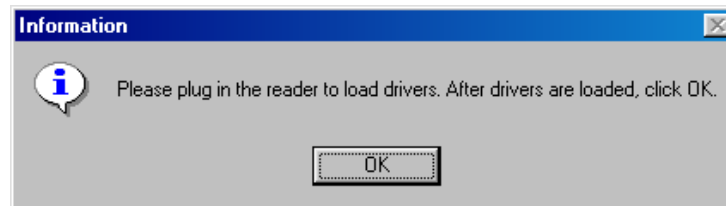
2. Double click 'setup.exe' (setup), then it will show the following installation interface



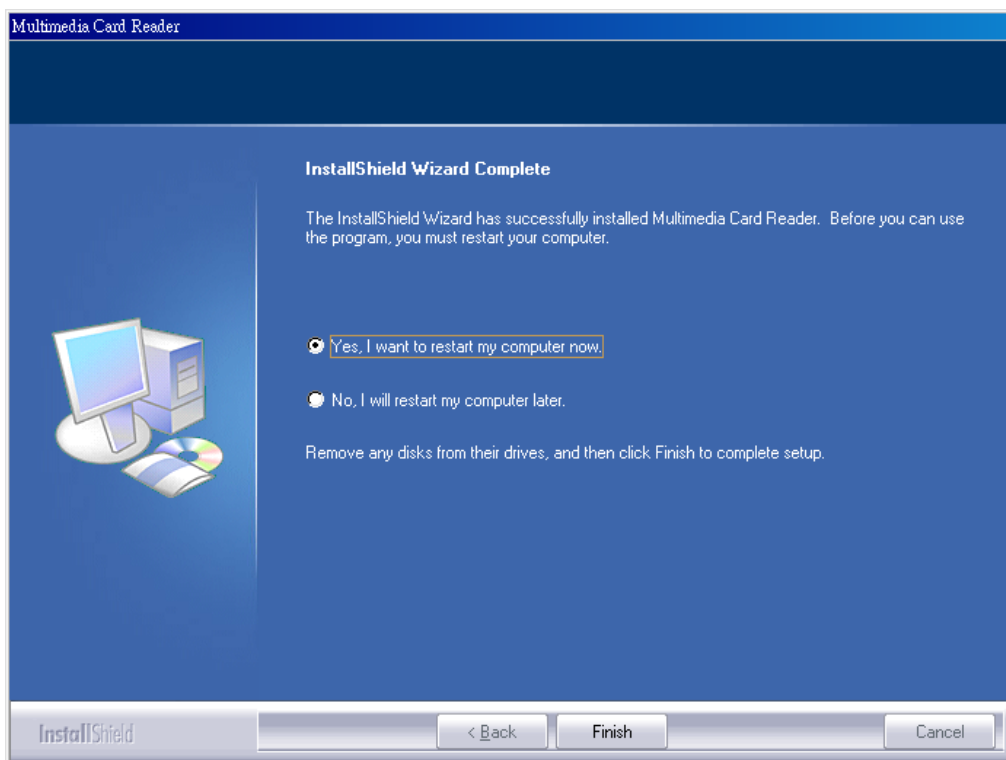
3. Restart your computer, and continue installation.
4. Click 'Next' to continue installation, it will copy the relative files to the system.



5. When the following window displayed, please turn off your computer and install the internal card reader into your computer. Then start again your computer and the system will detect it and install its driver.

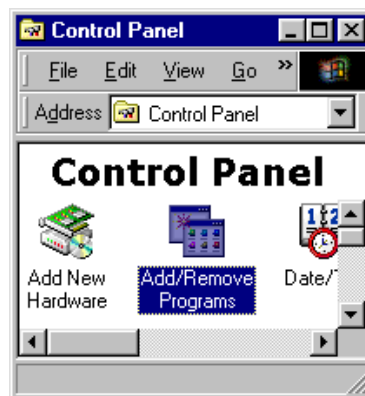
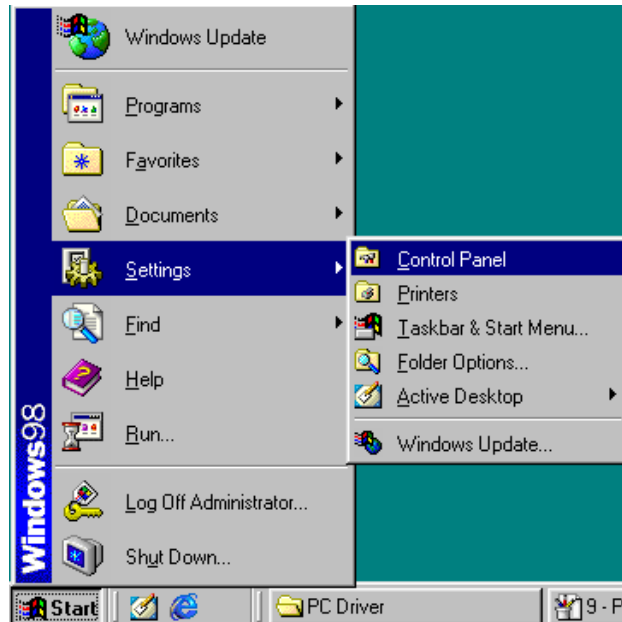


6. After installation, click 'OK', and click 'Finish' to restart your computer.

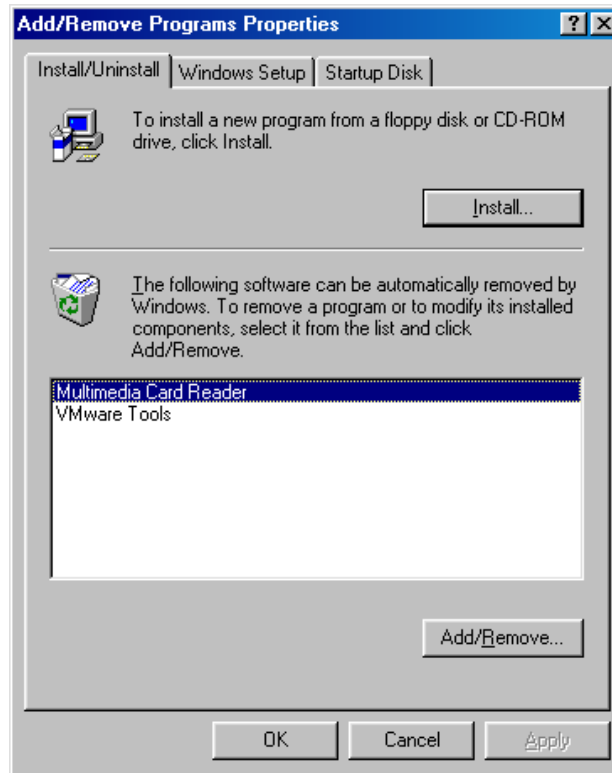


Uninstall USB card reader's driver

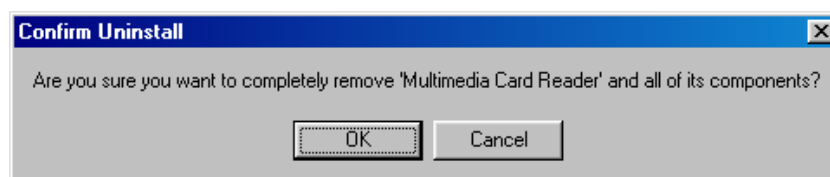
1. Please follow the path “Start” / “Settings” / “Control Panel” / “Add/Remove Programs”, Open “Add/Remove Programs” window

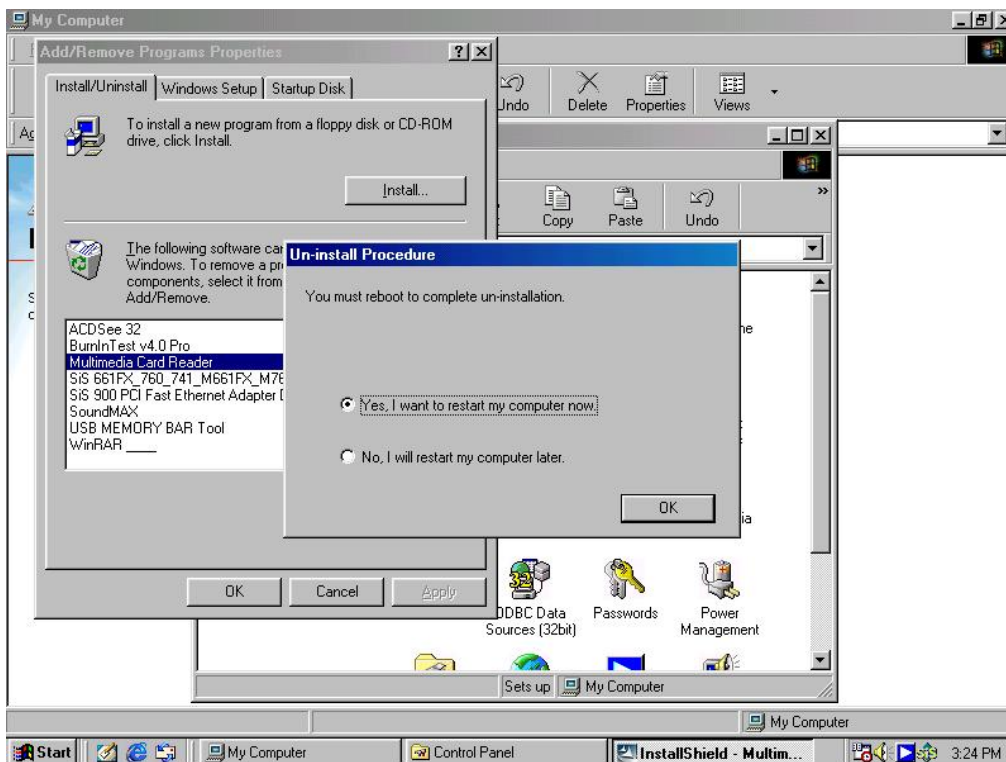
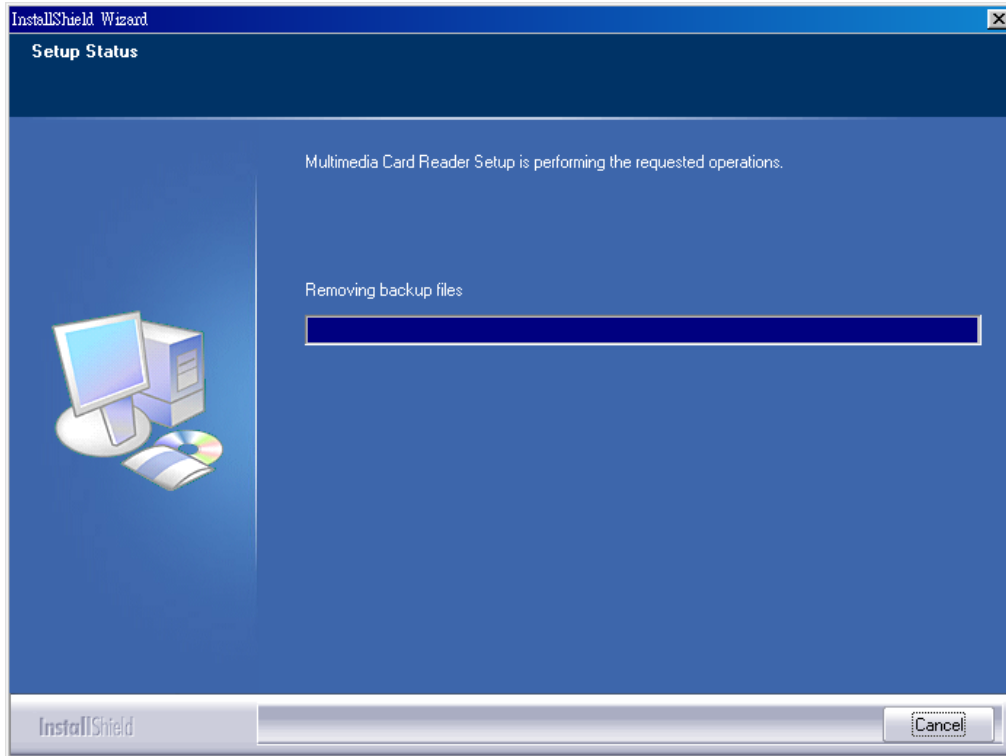


2. Please choose “Multimedia Card Reader”, and then click “Add/Remove (R)” in the down right corner



3. Click “OK”, just follow the uninstalling program cue to uninstall USB card reader’s driver





Chapter 6 Product Specification

Model	AE101
Dimensions	(L)101mm × (W)93mm × (H)25mm
Weight	184 g
Connectivity	USB1.1/2.0 High-speed
Memory card support list	Slot 1: SmartMedia
	Slot 2: CompactFlash (Type I/ II, Ultra II, Extreme, Extreme III, Ultra), Microdrive
	Slot 3: MMC, RS MMC*, MMCmobile*, MMCplus, MMC Micro* ,SD,SDHC, Mini SD*, Mini SDHC*, Micro SD* ,Mini SDHC* (* = Need Adapter)
	Slot 4: Memory Stick, Memory Stick Duo, Memory Stick Pro, MS Pro Duo, MS MagicGate , MS Duo MagicGate ,MS Pro MagicGate
Accessories	USB extension cable, User's manual
Support O/S	Windows98(SE)*/ME/2K/XP/Vista, Mac OS 10 or later (* = requires driver support)

Safety Instruction

- If the system can't find the card reader device when you plug it into your computer, please startup the USB controller in BIOS.
- Please plug the flash card into the right slot and don't mix up. We charge service for decrease of products due to inappropriate operation by users.
- Do not disconnect the flash card during the formatting or data accessing. No responsibility is provided for any damage to or loss of any program, data, or other information stored in abnormal operation.

Copyright Statement

No part of this publication may be reproduced in any form by any means without prior written permission. All trademarks, trade names and copyrights are properties of their respective owners.

Note: The contents of this Manual are subject to change without prior notice for further improvement.